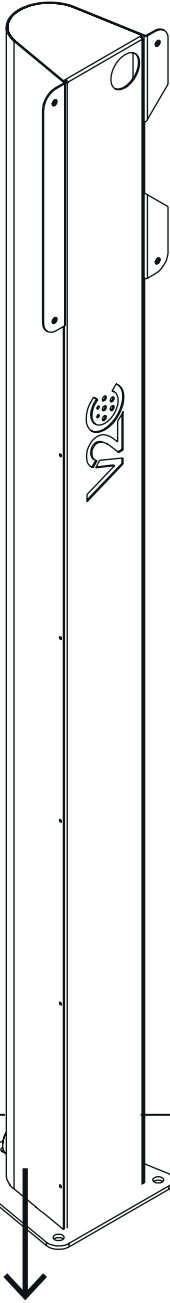
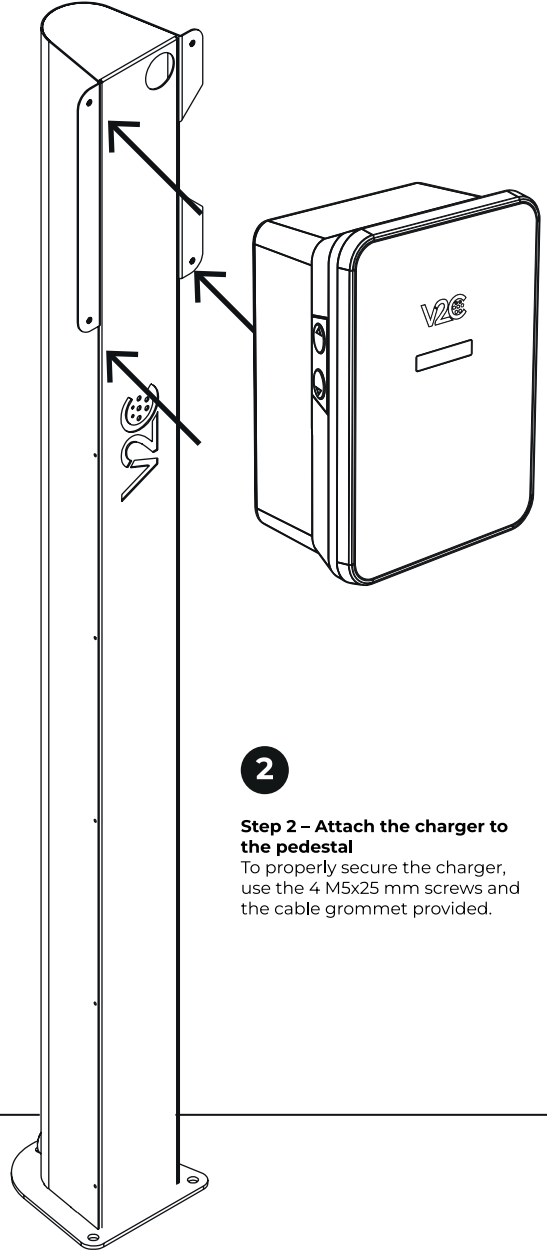


HOW TO INSTALL THE TRYDAN / TRYDAN PRO PEDESTAL



1

Step 1 – Fix the pedestal
For fixing it to the ground, it is recommended to use a chemical anchor fixing kit with M8x110 mm threaded rods (not included). Ensure that it is completely level and secure.



2

Step 2 – Attach the charger to the pedestal
To properly secure the charger, use the 4 M5x25 mm screws and the cable grommet provided.